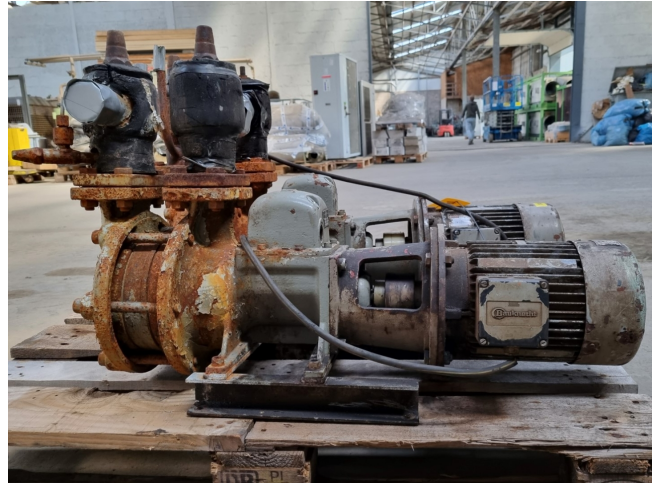


Witt GP 51

Specifications

Marca	Witt
Tipo	GP 51
Caudal volumétrico Q máx. (m ³ /h)	16,8
Altura de entrega H máx. (m)	13,0
Potencia máx. (kW)	1,5
Remarks	Y.o.b. 1974
Stock	1



Description

Used Witt GP 51

Used Witt GP 51 liquid pump for NH3 with a Bauknecht RF 2.2/6-75 electric motor - 945 RPM with the following specifications: Qmax: 16,8 m³/h - Hmax: 13 m - Pmax: 1,5 kW. Dimensions: 1000x520x660 mm (LxWxH).

